

AWOM

AQUATIC WARBLERS ON THE MOVE

Europe and Africa working together to safeguard wetlands



LIFE AQUATIC WARBLERS ON THE MOVE

Project number: 101148382-LIFE23-NAT-NL-LIFE AWOM

Monitoring of the Aquatic Warbler migration, ringing protocol

Milestone: MS47

Date: 04-26



Co-funded by the European Union



Produced with the support of the European Union LIFE financial instrument. Views and opinions expressed are, however, those of the author(s) only and do not necessarily reflect those of the European Union or CINEA. Neither the European Union nor CINEA can be held responsible for them.

The content of this report is the sole responsibility of the project Consortium and can in no way be taken to reflect the views of the European Union. It is the result of an independent review, and neither the Consortium, nor the authors accept or assume any responsibility or duty of care to any third party.

Authors:

- Mallaury Lacombe, Bretagne Vivante
- Christine Blaize, Bretagne Vivante
- Romain Lorrillière, Centre de Recherches sur la Biologie des Populations d'Oiseaux (CRBPO)

Document history:

Version	Date	Reviewed by	Status and comments
0.1	23-05-2025	Christine Blaize	First draft
0.2	03-06-2025	Christine Blaize	Second draft
0.3	18-06-2025	Christine Blaize & Romain Lorrillière	Third draft
0.4	11-07-2025	Christine Blaize & all partners	Fourth draft
0.5	30-07-2025	Christine Blaize	Fifth draft
1.0	16-04-2026	Mallaury Lacombe & Valeria Numbela	Final review and formatting

Table of Contents

Table of Figures	1
Executive summary	2
1. Introduction	3
2. Warning	4
3. Memo	4
4. ACROLA Protocol Set-up	5
4.1 Choice of Habitats.....	5
4.2 Period and Duration	8
4.3 Net Installation (unit).....	8
4.4 Tape Lure.....	9
5. Session	9
5.1 Definition.....	9
5.2 Humidity Reading on the Site, at Unit Level	9
5.3 Capture Pressure.....	9
5.4 Biometric Data.....	10
6. Data Entry and Mandatory Fields	11
6.1 Station Definition	11
6.2 Mandatory and Recommended Fields.....	11
6.2.1 Mandatory fields.....	11
6.2.2 Recommended fields.....	12
6.2.3 Fields for information purpose.....	12
7. National Regulations	12
8. References	13
9. Annexes	14
Annex 1 : Adiposity measurement (Kaiser, 1993).....	14
Annex 2 : Pectoral muscle measurement (Bairlein, 1995)	16
Annex 3 : Ringing databases comparison.....	17

Table of Figures

Figure 1: Sporova in Belarus, by A. Thiele, AWCT.....	5
Figure 2: Tyrai in Lithuania, by A. Morkvenas, AWCT.....	5
Figure 3: Djoudj in Senegal	5
Figure 4: Inner Delta of the Niger, by J. Foucher, Association ACROLA.....	5
Figure 5: Seine Estuary in France, by P. Provost, Maison de l'Estuaire.....	6
Figure 6: Trunvel in France, by A. Le Neve, Bretagne Vivante - SEPNE.....	6
Figure 7: Aiguillon Bay in France, by J. Gonin	6
Figure 8: Gironde Estuary in France, by R. Musseau, BioSphere Environnement.....	7
Figure 9: Canet-en-Roussillon in France, by M. Aubry, GOR.....	7
Figure 10: Laguna Boada in Spain, by D. Miguelez, Fundacion Global Nature	7
Figure 11: Laguna Gallocanta in Spain, by Carlos Perez Laborda.....	8
Figure 12: Prat de Cabanes-Torreblanca in Spain, by Miguel Tirado.....	8

Executive summary

This document presents the international version of the ACROLA protocol, designed for the scientific monitoring of the Aquatic Warbler (*Acrocephalus paludicola*), Europe's most endangered passerine bird. The protocol is implemented within the framework of the LIFE AWOM project (2025 – 2029), which aims to restore and safeguard key wetlands along the species' migratory route, with a focus on Belgium, France, Portugal, Spain, and Senegal.

The protocol standardises bird-ringing practices to improve understanding of the species' migration and to support long-term population monitoring. Capture stations are required to operate mist nets in suitable wetland habitats and to use a tape lure broadcasting exclusively the Aquatic Warbler's song. A minimum capture effort of 15 days during post-nuptial migration period (July – October) is recommended, and should ideally be repeated over multiple years.

All activities must comply with national ringing regulations. To ensure consistency and comparability across countries, the protocol defines a set of mandatory data fields for all participating stations. By harmonising monitoring practices, the ACROLA protocol enables the collection of robust, comparable data essential for large-scale conservation of the species.

1. Introduction

The Aquatic Warbler, *Acrocephalus paludicola*, is Europe's most endangered continental passerine. Its critical conservation status has prompted more than 25 years of dedicated efforts, now reinforced by the LIFE Aquatic Warblers On the Move (LIFE AWOM) project, launched on 1 January 2025 and running for five years.

This project aims to protect, manage, and restore over 1.000 hectares of wetlands used by the species along its migratory flyway, including sites in Belgium, France, Spain, Portugal, and the wintering grounds in Senegal. All management actions are designed to be scientific-based, sustainable, and supportive of local communities.

Due to the unobtrusive behaviour of the Aquatic Warbler, bird ringing remains the most effective scientific method for monitoring its populations. Capturing individuals with mist nets, ringing them, and collecting biometric measurements (e.g., body mass, fat reserves, wing, tarsus, and bill length) serve multiple objectives:

- (1) improving knowledge of migration ecology, including phenological shifts, physical condition along the flyway, and the importance of stopover sites for refueling;
- (2) refining the understanding of migratory routes and wintering areas for each breeding population through coordinated ringing in Africa and Europe;
- (3) monitoring population abundance and trends at each site and across countries;
- 4) identifying priority wetlands for protection and management;
- 5) assessing the effectiveness of restoration and management actions;
- 6) generating robust data to develop or update Species Action Plans.

In addition, in some regions birds will be fitted with tags to further track movements and behaviours.

To maximize the value and comparability of the data collected, standardising ringing methods is essential. While full standardisation is not strictly required for all metrics – such as fat reserve measurements or assessing restoration outcomes – a consistent protocol enhances the ability to compare results across countries and sites, particularly for population monitoring and gap-filling surveys.

For this reason, adopting a common ringing protocol has been proposed. In France, the national ringing center (Centre de Recherches sur la Biologie des Populations d'Oiseaux, CRBPO) has used a species-specific protocol – the ACROLA protocol – since 2008 to monitor autumn migration. This protocol provides estimates of passage numbers and improves understanding of migration patterns, timing, and age structure. Building on this long-standing experience, the ACROLA protocol has been selected as the foundation for a harmonised approach across all LIFE AWOM partner countries.

This document presents an adapted international version of the French ACROLA protocol, intended for use by all LIFE AWOM partners involved in bird-ringing activities.

2. Warning

This version of the ACROLA protocol is proposed as a common framework for all partners conducting ringing activities within the LIFE AWOM project.

However, it does **not** replace or supersede the rules and procedures established by national ringing schemes.

The of this protocol is therefore subject to prior authorisation from the relevant national ringing authority.

3. Memo

- Install units in preferential habitats: wetlands with a mosaic of vegetation, including taller and more open areas (e.g., bulrush), ideally near water. Prioritise ecotones between two types of vegetation.
- Nets must be arranged in lines (units) of three 12-meter nets (3x12 m).
- Tape lure: Aquatic Warbler song only.
- Records capture pressure and humidity for each unit.
- The total length of all units combined must be a multiple of 36 meters.
- Favor ringing stations operating 15 days to 1 month, and ideally maintained for several consecutive years.
- A nets-positioning plan is required.
- Data requirements: 25 mandatory fields, 3 recommended fields, and 4 optional fields for information purposes.

4. ACROLA Protocol Set-up

4.1 Choice of Habitats

The Aquatic Warbler is a species that can be found in wet meadows dominated by low helophytes, interspersed with taller vegetation structures such as reed beds.

Nets should be installed in wet and sub-halophilous meadows where herbaceous vegetation is well-developed (i.e., neither mown nor grazed), and/or along the edges of reed beds, preferably in the most flooded areas.

The images below (Figs. 1-12) present a range of habitats favourable to the species and can help guide the selection of suitable ringing stations. Additional guidance on identifying appropriate habitats is available in the [species information booklet](#).



Figure 1: Sporova in Belarus, by A. Thiele, AWCT



Figure 2: Tyrai in Lithuania, by A. Morkvenas, AWCT



Figure 3: Djoudj in Senegal



Figure 4: Inner Delta of the Niger, by J. Foucher, Association ACROLA



Figure 5: Seine Estuary in France, by P. Provost, Maison de l'Estuaire



Figure 6: Trunvel in France, by A. Le Neve, Bretagne Vivante - SEPNB



Figure 7: Aiguillon Bay in France, by J. Gonin



Figure 8: Gironde Estuary in France, by R. Musseau, BioSphere Environnement



Figure 9: Canet-en-Roussillon in France, by M. Aubry, GOR



Figure 10: Laguna Boada in Spain, by D. Miguelez, Fundacion Global Nature



Figure 11: Laguna Gallocanta in Spain, by Carlos Perez Laborda



Figure 12: Prat de Cabanes-Torreblanca in Spain, by Miguel Tirado

4.2 Period and Duration

Experience shows that detecting the species at a site requires a ringing effort of at least **10 consecutive days** during the **peak migration period**. Therefore, each station must operate for a minimum of 10 days. However, extending the ringing period to 15 days or more is strongly recommended to ensure coverage of the peak passage.

A commitment of at least **three consecutive years**, with consistent effort of more than 15 days per season, is essential to generate locally valuable data and contribute meaningfully to fine-scale modelling of the species' migratory passage.

4.3 Net Installation (unit)

Monitoring Aquatic Warbler migration under the ACROLA protocol must be conducted in suitable habitats, which are now well documented (see habitat section above).

The protocol is based on a **capture unit**, consisting of three aligned 12-m nets (total = 36 m). Multiple units may be installed, either in extension of the first or in separate locations. **However**, for site-level data analysis, it is recommended to separate units by at least 50 m.

The orientation and exact placement of nets are flexible and should be adapted to site configuration, dominant winds, available space, and the number of ringers and assistants. A minimum of **three units** (i.e., 108 m of nets) is recommended. Each unit must be assigned a **unique number**, which must be reported in the data entry form.

Net height may be adjusted according to habitat structure (e.g., 3-pockets nets in meadow habitats, and 5-pocket nets in taller vegetation). Nets should be suitable for capturing small passerines – thin, durable, and preferably with a mesh size of **14x14mm or 16x16mm**.

To avoid disturbance to reed bed-breeding birds, netting in reed beds must take place outside the breeding season.

4.4 Tape Lure

The tape lure must be mono-specific and remain the same throughout the season. Only the Aquatic Warbler song may be broadcast. A royalty-free sound file [is available on the CRBPO website](#).

Because nocturnal playback may negatively affect birds and alter migration phenology, tape lure use should **begin at dawn**, and **no earlier than one hour before legal sunrise**. Playback **ends when nets are closed**.

Each capture unit must have one playback device, positioned at the center of the three-net span. The choice of equipment (power source, frequency, file format, support, etc.) is left to the operator. Experience shows that **high volume is unnecessary**.

5. Session

5.1 Definition

A **session** is defined by the ringing station (same hamlet/location) and by the capture pressure (see section 5.3 below).

All auto-controls (recaptures by the same ringer who originally ringed the bird) and allo-controls (recaptures by a different ringer), including intra-day controls, must be recorded.

5.2 Humidity Reading on the Site, at Unit Level

Humidity must be assessed for each capture unit and recorded using the following scale:

- **0**: soil exposed (**dry**)
- **1**: soil flooded on **at least on 50%** of the unit
- **2**: soil flooded on **50% to 100%** of the unit

5.3 Capture Pressure

Nets must be opened **before dawn**, approximately 45 minutes before sunrise, which also marks the start of the tape lure broadcasting. The duration of each capture session should remain as consistent as possible

throughout the season.

Three elements are essential for quantifying capture pressure:

- **Start time** of the session
- **Duration** of the capture session
- **Total net length** (must always be a **multiple of 36 m**)

5.4 Biometric Data

For every capture and/or recapture, the following **biometric measurements** are essential to assess bird fattening and overall body condition:

- **Mass**, measured to the nearest 1/10 gram (0.1 g)
- **Adiposity** (fat score, following classification from Kaiser, 1993, see **Annex 1**)
- **Muscle** (following classification from Bairlein, 1995, see **Annex 2**)
- **Length of the tarsus**, measured to the nearest 1/10 millimeter (0.1 mm) (Fig. 13)

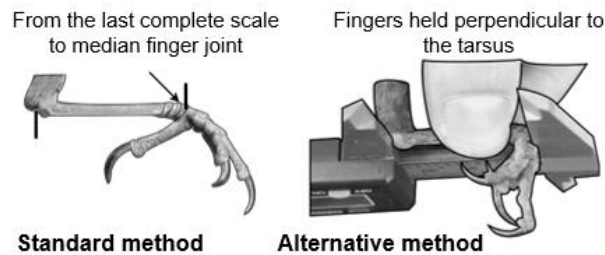


Figure 13 : Measurement of the tarsus length

- **Length of the folded wing**, measured to the nearest ½ millimeter (0.5 mm) (Fig. 14)

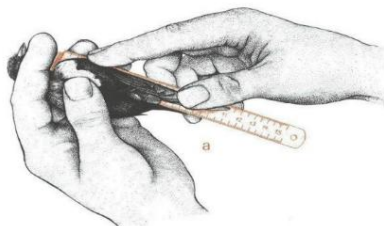


Figure 14 : Measurement of the folded wing (D. Ornith.-Ges., 2011)

- **Length of the bill (bill-to-skull)**, measured to the nearest ½ millimeter (0.5 mm) (Fig. 15)

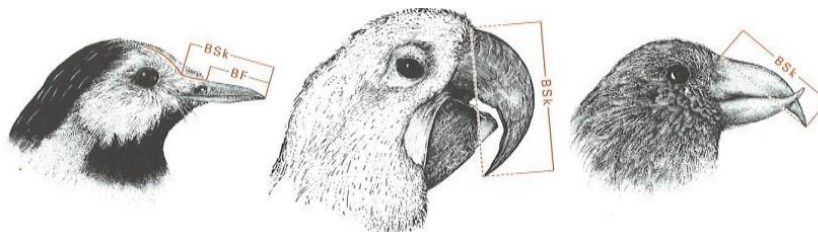


Figure 15 : Measurement of the bill length, from bill-to-skull (D. Ornith.-Ges., 2011)

6. Data Entry and Mandatory Fields

6.1 Station Definition

A ringing station is defined by four fields: **country, the department/region, city, and the lieu-dit** (place name).

In France, any change in the spelling of the *lieu-dit* (place name) automatically creates a new ringing station in the database. Thus, the name of the *lieu-dit* must remain strictly identical over time (same spelling, same capitalization).

A change in the *lieu-dit* name is required when:

- the capture area is significantly modified, or
- the position of the ACROLA units is significantly changed.

For each ringing station, a plan or map showing the position of all units/nets is required, along with one or two photos illustrating the dominant habitats at the site.

6.2 Mandatory and Recommended Fields

In the LIFE AWOM countries, the French and Spanish ringing centers provide ringers with Excel templates to ensure standardised national data collection. A comparison of these fields is presented in **Annex 3**.

For the international LIFE AWOM protocol, fields are categorized as '**mandatory, recommended**, and '**for information**' only. Fields not currently included in national databases (**Annex 3**) should be added whenever possible.

6.2.1 Mandatory fields

- Unique ring number
- Ringing action
- Species (usually coded with a [6-letters acronym](#))
- Ringing date (DD/MM/YYYY)
- Ringing time (HH:MM); leave blank if unknown
- Country of ringing (acronyms on [EURING website](#))
- Region or province (acronyms on [EURING website](#))
- For **France, Spain and Switzerland**: city of ringing, written in capital letters, without special characters or abbreviations
- Lieu-dit (place name); must remain identical for the same station over time
- Latitude (decimal degrees or degrees/minutes/seconds)
- Longitude (decimal degrees or degrees/minutes /seconds)
- Sex
- Age
- Duration of the capture session (HH:MM)
- Capture effort (total net length per unit, in meters)
- Session start time (HH:MM)
- Type of net (mesh size, number of pockets, thread thickness). Example: for a net with a 14x14 mesh, 5 pockets and a thickness of 70/2 deniers, note as **D14x14P5E70/2**
- Dominant habitat at the ringing station

- Tape lure used (ACROLA only)
- Net number (corresponding to the 3-net unit)
- Humidity index for each **unit**. Example, for 3 units: 2, 0, 1.
- Biometric data (see section 5.4)

6.2.2 Recommended fields

- Name of the responsible ringer
- Session theme (ACROLA)
- Bird health status

6.2.3 Fields for information purpose

- Ringing center
- Condition of recovery or control
- Circumstance of recovery or control
- Molt status

7. National Regulations

In **France**, ringing activities are regulated under Article L411-1CE of the Environmental Code. The CRBPO is the national authority responsible for managing ringing activities and data.

In **Spain**, ringers must comply with National Act 42/2007 on natural heritage and biodiversity, which provides the legal framework for issuing ringing permits through regional authorities (*comunidades autónomas*). These regional authorities issue permits for terrestrial birds and oversee compliance.

Catalonia has additional legislation (Decree 148/1992, 9 June) from the Generalitat de Catalunya. The Institut Català d'Ornitologia (ICO) evaluates candidates and recommends them for scientific ringing permits.

Spain has two ringing centers: SEO/BirdLife and Aranzadi.

In **Belgium**, ringing activities require authorisation from the competent authorities and must follow procedures established by the Institut Royal des Sciences Naturelles de Belgique (IRSNB). Ringers complete two internship periods of at least two years each, with an exam after each period. The IRSNB also manages the national ringing database.

In **Portugal**, the capture of wild birds is generally prohibited under the Birds Directive 2009/147/EC. However, the Instituto da Conservação da Natureza e das Floresta (ICNF), the national authority for nature conservation, may authorise captures for scientific marking within monitoring projects and programs.

As also the Portuguese ringing center, the ICNF accredits ringers, issues credentials specifying authorised activities, and manages the national ringing database.

8. References

Bairlein, F. 1995. Manual of Field Methods: European-African Songbird Migration Network. 25 pages.

Deutsche Ornithologen-Gesellschaft. Eck, S., Fiebig, J., Fiedler, W., Heynen, I., Nicolai, B., Töpfer, T., van den Elzen, R., Winkler, R., Woog, F., 2011. Measuring Birds–Vögel vermessen. *Ostrich*, 83, 117.

Jiguet, F., Chiron, F., Dehorter, O., Dugué, H., Provost, P., Musseau, R., Guyot, G., Latraube, F., Fontanilles, P., Séchet, E., Laignel, J., Gruwier, X., Le Nevé, A. 2011. How many Aquatic Warbler *Acrocephalus paludicola* stop over in France during the autumn migration? *Acta Ornithologica* 46: 135-142

Jiguet, F., Dehorter, O., Gonin, J., Latraube, F., Le Nevé A., Provost, P. 2012. Connaissance de la migration du Phragmite aquatique en France : méthodologie de suivi scientifique et réglementation. CRBPO-MNHN, LPO Charente-Maritime, LPO Loire-Atlantique, Bretagne Vivante – SEPNB, LPO Sept-Îles.

Kaiser, A. 1993. A new multi-category classification of subcutaneous fat deposits of songbirds (Una Nueva Clasificación, con Multi-categorías, para los Depósitos de Grasa en Aves Canoras). *Journal of Field Ornithology*, 246-255.

9. Annexes

Annex 1 : Adiposity measurement (Kaiser, 1993)

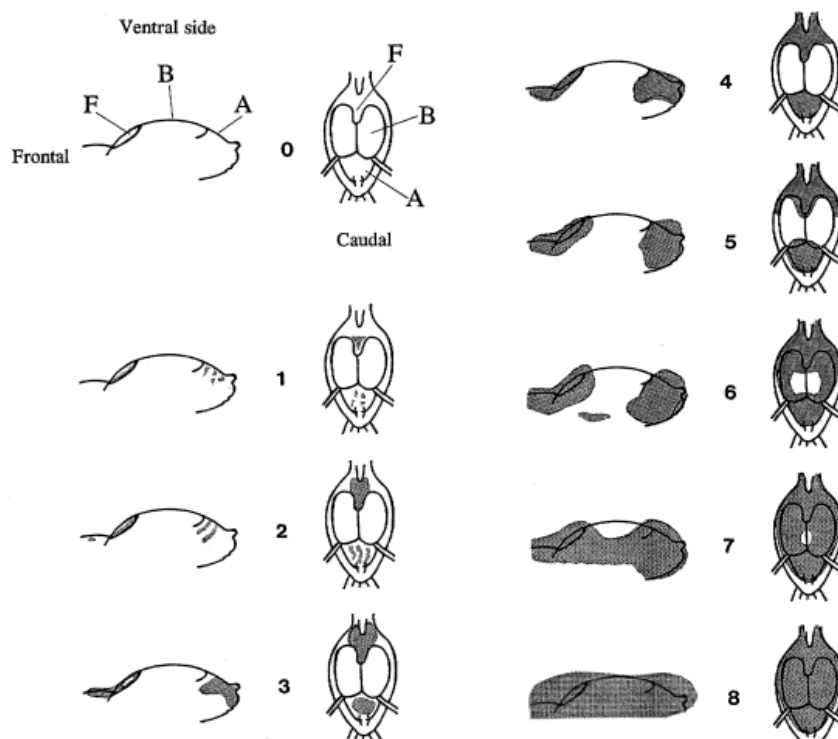


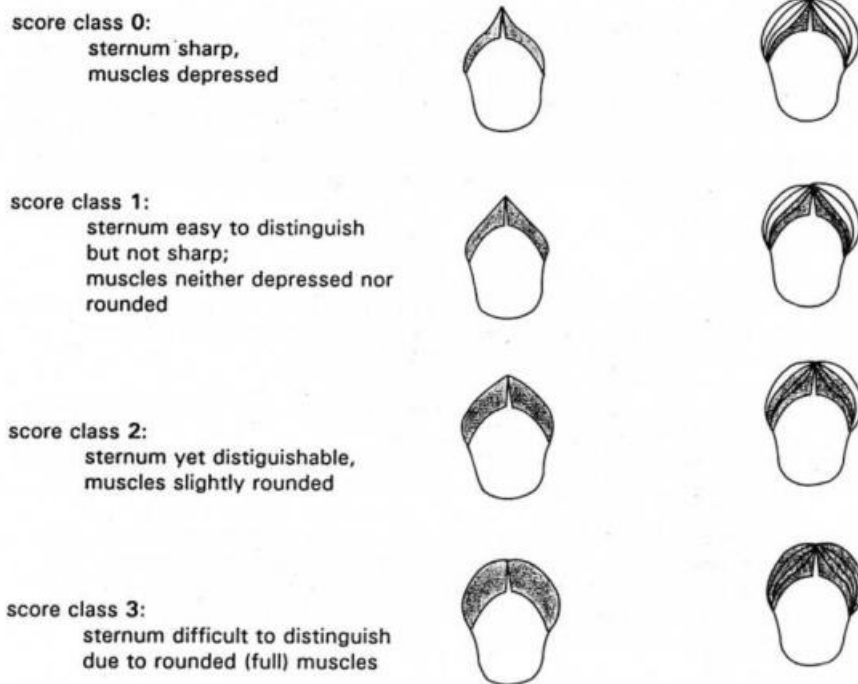
FIGURE 1. Main fat score classes (0-8). F = furcular depression (interclavicular depression), B = breast muscles, A = abdomen, stippled = fat.

Main fat score classes (0-8). F = Furcular depression (interclavicular depression), B = Breast muscles, A = Abdomen, stippled = fat

Main class	Subclass	Furcular depression	Abdomen	Color of the considered areas
0	0.00	no fat	no fat	dark red
	0.25	barest trace, very narrow stripe	fat deposits not yet delimited	red
	0.50	small stripe	fat deposits not yet delimited	red
1	0.75	wedge-shaped	small trace, patchy	light red
	1.00	wide wedge	trace, very small, stripes around intestinal loops (<1 mm)	light red
	1.25	half of furcular depression is covered	trace, stripes 1 mm wide	yellow-red
	1.50	almost completely covered with fat	trace, stripes smaller than intestinal loops	yellow-red
	1.75	small amount, almost completely covered with fat	wide stripes (2 mm)	yellowish
2	2.00	completely covered, shape deeply concave	slips of visceral fat, area between intestinal loops completely filled	light yellow
	2.25	completely covered, shape deeply concave	some subcutaneous lipid, not yet forming a pad	light yellow
	2.50	completely covered, shape deeply concave	very small pad	light yellow
	2.75	completely covered, shape deeply concave	small pad, at least 2 or 3 intestinal loops still visible	light yellow
3	3.00	moderate fat reserves cover ends of interclavicles	flat pad, one loop still visible	light yellow
	3.25	concave	slightly rounded pad, one loop sometimes visible	yolk-yellow
	3.50	still concave	slightly bulging, loops completely covered	yolk-yellow

4	3.75	almost filled	bulging	yolk-yellow
	4.00	filled up to distal portion of interclavicles	conspicuously bulging (2-4 mm)	.
	4.25	filled up to distal portion of interclavicles	further increase in bulge (4-5 mm)	.
	4.50	filled up to distal portion of interclavicles	abdominal structures completely covered and bulging	.
5	4.75	slightly bulging with central depression (concave)	abdominal structures completely covered and bulging	.
	5.00	convex bulge	extreme convex bulge, increasing thickness	.
	5.25	just covering flight muscles from either furc. or abdomen	extreme convex bulge, increasing thickness	.
	5.50	covering border of flight muscles a few mm	covering border of flight muscles a few mm	.
6	6.00	covering flight muscles by several mm	covering abdominal part of flight muscles by several mm	.
	6.50		fat reaches flight muscles from sides of wings	.
7	6.75		fat covering flight muscles conspicuously	.
	7.00		three quarters of flight muscles covered	.
	7.25		large rounded fat-free area in middle of breast	.
	7.50		small rounded fat-free area (red)	.
8	7.75		very small fat-free area still visible	.
	8.00		flight muscles not visible, fat layer covers underside/ventral side of the bird completely	.

Annex 2 : Pectoral muscle measurement (Bairlein, 1995)



Drawings by Göran Walinder, Falsterbo B.O., based on studies on live birds trapped for ringing and a few dissected ones.

Annex 3 : Ringing databases comparison

Field content	France		Spain				Portugal	Belgium
	Fields	Codes or units	Fields	Units	Fields	Units		
Unique number of the ring	BAGUE	Unique number	Anilla	Unique number	ANILLA	Unique number		
Ringing action	ACTION	B (ringing), C (control), R (recovery of a dead bird)	Tipo Registro	A (ringing), R (control)				
Species ringed	ESPECE	6-letter codes (3 first of genus, 3 first of specie, with some exceptions)	CodigoEspecie	Euring, or see data entry guide	ESPECIE	Scientific name		
Ringing date	DATE	DD/MM/YYYY	FechaCaptura	DD/MM/YY	DIA MES AÑO	DD MM YYYY		
Ringing time	HEURE	HH:MM:SS	HoraCaptura	HH:MM:SS				
Country	PAYS	Euring			PAE	Free (in English)		
Administrative subdivision	DEPT	Euring	CodigoPROVINCIA	See data entry guide	PROVINCIA	Free		
City	LOCALITE	Official name from the INSEE	MUNICIPIO	Free	LOCALIDAD	Free		
Lieu-dit	LIEUDIT	Free	CodigoLocalidad	See data entry guide	TOPONIMO	Free		
Latitude	LAT	DD (Decimal Degrees) or DMS (Degrees, Minutes, Seconds)			Lat +/° LATITUD	+ or - DMS (Degrees Minutes Seconds), condensed		
Longitude	LON	DD (Decimal Degrees) or DMS (Degrees, Minutes, Seconds)			Long +/° LONGITUD	+ or - DMS (Degrees Minutes Seconds), condensed		
Mandatory	Bird sex	SEXE	CodigoSexo	0, 1, 2	SEXO	U, F, M		
	Bird age	AGE	CodigoEdad	0, 1, 2, 3, 4, 5, 6, 7, 8, 9, A, B, C	EDAD	0, 1, 2, 3, 4, 5, 6, 7, 8, 9, A, B, C, D, E		
	Session duration	DS	HoraHasta (not exactly, but useful to have the session duration)	HH:MM:SS	N Horas	Nb hours		
	Capture effort	ES			Metros Red	Meters of net		
	Session start time (opening of the first net)	HS	HoraDesde	HH:MM:SS	HoraAper	HH:MM		
	Type of trap	GE	CodigoMetodo	See data entry guide	MET CAPTURA	See data entry guide		
	Dominant habitat on the station	HAB	CodigoHabitat	See data entry guide				
	Tape lure	RE	CodigoReclamo	Type of lure, see data entry guide	RECLAMO	Type of lure, see data entry guide		
	Net number	NF						
	Humidity of the station	EAU						
	Mass	MA	Peso	Grams	PESO	Grams		
	Adiposity	AD	CodigoGrasa	0, 1, 2, 3, 4, 5, 6, 7, 8, or 9	GRASA*	Koiser (1993)		
	Pectoral muscle	MUSCLE	CodigoMusculo	0, 1, 2, 3, 9	MUSCULO	(Boirlein 1995)		
	Tarsus length	LT	Tarsa	Millimeters				
	Wing length	LP	Ala	Millimeters	ALA*	Millimeters		
	Bill length	BC						
Recommended	Name of the ringer	BAGUEUR	CodAnillador	Code ringer	ANILLADOR	Code ringer		
	Session theme	THEME SESSIO N						
	Health status	ES	CodigoEstado	See data entry guide				
	Ringing center	CENTRE	CodigoCentro	Euring, or see data entry guide				
For information purposes	Condition of recovery	COND REPR	CodigoCondicion	See data entry guide	CONDICIONES DE RECUPERACION	Free		
	Circumstance of recovery	CIRC REPR	CodigoCircunstancia	See data entry guide	CIRCUNSTANCIAS DE RECUPERACION	Free		
	Molt status	MU	CodigoMuda	1, 2, 3, 4, 5, 6 or 7	MUDA ACTIVA	Si or No		

No standardized fields

No standardized fields