

June 2025

10%

of the country's total area, or cover between 646,000-878,900 hectares



The most significant peatland areas are located in the southeastern and western Lithuanian highlands, and notably in the western Nemunas delta region.

Peatlands in Lithuania

78% of peatlands within Lithuania are characterised as fens, covering 512,626 hectares and typically located at lake edges or in valleys.

About 14% of Lithuanian peatlands are transition mires, covering 89,359 hectares.

Only 8% (52,027 hectares) are bogs.

Current Threats

68%

of Lithuania's peatlands are degraded.

9,78

million tons of CO₂, annual emissions from peatlands



Agricultural use occupies

45%

of the country's peatlands.

308.9

million euros lost due to peatland degradation.

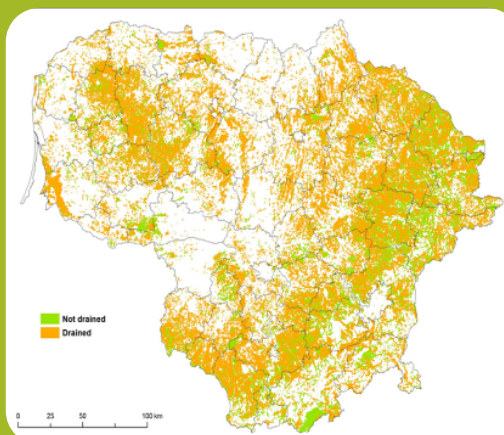


Figure 1: Map of peatlands in Lithuania, separated between drained and undrained sites, with area slightly exaggerated for context



Conservation & Restoration projects

- Starting in 2024, new drainage implementation is prohibited in Lithuania.
- Currently, 158,160 hectares of peatlands are protected, and €16 million has been allocated to restore 8,000 hectares of degraded peatlands as part of the Recovery and Resilience Plan.
- Projects like LIFE Peat Restore are actively rewetting 465 hectares of degraded bogs, which involves building dams, removing non-native plants, re-establishing Sphagnum communities, and filling drainage ditches in the Amalvas, Plinkšiai, Sachara, Aukštumala, and Puščia peatlands



DID YOU KNOW?

Recent studies estimated that 262,689 hectares of Lithuania's peatlands are considered suitable for paludiculture, opening up considerable future possibilities for sustainable land-use



Funded by the European Union. Views and opinions expressed are however those of the author(s) only and do not necessarily reflect those of the European Union or CINEA. Neither the European Union nor CINEA can be held responsible for them.



Wetlands
INTERNATIONAL

